

Seattle Symphony

Spring Concerts

The Seattle Symphony is excited to welcome the **Boeing Leadership Network** and the **Boeing Leadership Network Retirees** to their 120th Season and the 25th Anniversary of Benaroya Hall. BLN and BLNR receives a 15% Discount on most Seattle Symphony concerts and National Geographic Live events. Your promo code will also waive the Handling Fees, an additional 15% savings. The **BLN** and **BLNR** Discount Promo Code for the 2023/2024 Season is **PIANO24**, for **15%** off Tickets and Pay No Handling Fees. Thank you for supporting the Seattle Symphony with your ticket purchases.

Location: Benaroya Hall on 3rd Avenue between Union St. and University St., Seattle
Taper Foundation Auditorium

Event Coordinator: Sharon Lucas, [mail to: Sharon Lucas](mailto:Sharon.Lucas@seattlesymphony.org)

Instructions: BLNR members: Instructions on how to use the Promo Code: *To use your promo code, enter “PIANO24” in the upper right corner of the concert (& performance) you wish to attend and hit Apply. You may now select your seats and receive the lower price.* You can buy up to four tickets online at www.seattlesymphony.org/. If you want more than four call the box office at 206.215.4747 or 1.866.933.4747. Give the box office agent your Promo Code and they will extend the discount to you. You can also use your Promo Code at the Box office Window.

We accept Discover, Visa, MasterCard, American Express and Cash.

Ticket distribution: Purchases online - print tickets at-home, have them mailed to you or pick them up at the Will Call at the Box Office. Will Call opens 90 minutes before the concert start time.



Conrad Tao Mozart Piano Concerto No. 24 PLAYLIST SERIES

Sunny Xia conductor
Conrad Tao piano
Mara Gearman viola
Seattle Symphony

Conrad Tao weaves together Mozart's Piano Concert No. 24 into an adventurous program Hailed by The New York Times as an artist of “probing intellect and open-hearted vision, “Tao brings an elegant sensibility to this darkly brooding and distinctive work. Complementing Mozart's concerto are two rarely performed works by 20th century American composers.

Friday, March 1 At 7:30 PM

Enter “**PIANO24**” before you select
your seats for **15% OFF** Tickets and **No Fees**
Tickets from: \$25

[BUY NOW](#)



Bach St. John Passion

MASTERWORK SERIES

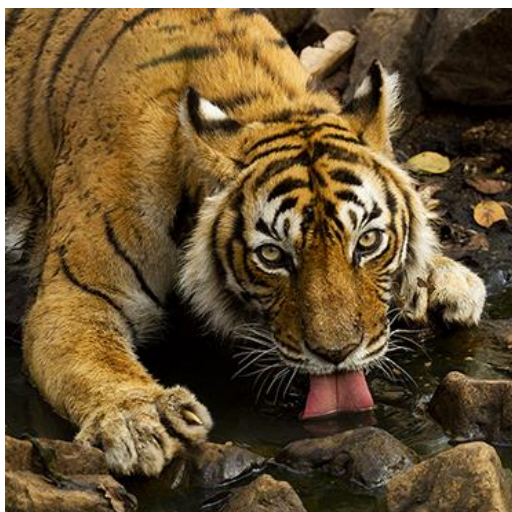
Bernard Labadie conductor
Andrew Haji piano
Paul Max Tipton bass-baritone
Lauren Snouffer soprano
Seattle Symphony

Seattle Symphony celebrates the 300th anniversary of Bach's profound St. John Passion with its premiere performance of the dramatic masterpiece. Bernard Labadie, an internationally

recognized expert of Baroque music, leads an all-star cast of vocalists through the trial and execution of Jesus in what is ultimately a message of hope and redemption.

Thursday, March 7 At 7:30PM
Saturday, March 9 At 8 PM

Enter "**PIANO24**" before you select
your seats for **15% OFF** Tickets and **No Fees** [**BUY NOW**](#)
Tickets from: \$35



Wild Cats Revealed

NATIONAL GEOGRAPHIC LIVE

Sandesh Kadur explorer

With landscapes spanning the towering Himalaya, arid plains, and dense jungles, India is home to an unmatched diversity of wild cats. While many of the big cats are well known and thoroughly documented, photographer, filmmaker and National Geographic Explorer Sandesh Kadur is on a mission to highlight the country's lesser-known felines in order to protect their future.

Sunday, March 10 At 2 PM
Monday, March 11 At 7:30 PM
Tuesday, March 12 At 7:30 PM

Enter "**PIANO24**" before you select your seats
to save **15% OFF** Tickets and **No Fees** [**BUY NOW**](#)
Tickets from: \$25



Sibelius Violin Concerto **MASTERWORKS SERIES**

Dima Slobodeniouk conductor

Ning Feng violin

Seattle Symphony

Seattle Symphony Indian violin superstar Kala Ramnath returns by popular demand to perform her Hindustani Violin

Concerto. Known as “the singing violin,” Ramnath has revolutionized Indian vocal and violin technique, forging musical alliance around the globe with her staggering virtuosity. Two transcendent tone poems by Richard Strauss and whimsical work based on Czech fairytale complete the program.

Thursday, March 14 At 7:30 PM

Saturday, March 16 At 8 PM

Good Seats Available both days!

Enter “**PIANO24**” before you select your seats
to save **15% OFF** Tickets and **No Fees**
Tickets from: **\$29**

[BUY NOW](#)



Glenn Miller Orchestra **EXCLUSIVES**

Erik Stabnau Music Director

Jenny Swoish vocals

Glenn Miller Orchestra musical group

The world-famous Glenn Miller Orchestra with its unique jazz sound, is one of the most popular and sought after big bands

in the world today.

Friday, March 15 At 8 PM

Enter “**PIANO24**” before you select your seats
to save **15% OFF** Tickets and **No Fees**
Tickets from: **\$35**

[BUY NOW](#)



Simon Trpčeski Plays Tchaikovsky

MASTERWORKS SERIES

Osmo Vänskä conductor

Simon Trpčeski piano

Seattle Symphony

Tchaikovsky's powerful First Piano Concerto is the epitome of Romanticism. Experience the grandeur of this beloved classic played by the charismatic and expressive Simon Trpčeski..

Thursday, March 21 At 7:30 PM

Saturday, March 23 At 8 PM

Sunday, March 24 At 2 PM

Enter "**PIANO24**" before you select your seats

to save **15% OFF** Tickets and **No Fees**

[BUY NOW](#)

Tickets from: \$35



Mahler Symphony No. 3

MASTERWORKS SERIES

Kahchun Wong conductor

Julie Boulianne mezzo-soprano

Northwest Boychoir

Seattle Symphony Chorale

Seattle Symphony

Mahler famously said that a "symphony must be like the world. It must embrace everything." His massive Third Symphony fulfills this belief by encompassing the vastness of nature, expressing in turn the elemental forces of life, the flowers in the meadow and the animals in the forest before reaching beyond the earthly realm to depict the heavens and love itself.

Thursday, April 11 At 7:30 PM

Saturday, April 13 At 8 PM

Sunday, April 14 At 2 PM

Enter "**PIANO24**" before you select your seats

to save **15% OFF** Tickets and **No Fees**

[BUY NOW](#)

Tickets from: \$35



Dvorak Symphony No. 6
MASTERWORKS SERIES

Shiyeon Sung conductor
Alisa Weilerstein cello
Seattle Symphony

Alisa Weilerstein plays the Seattle Symphony premiere of Lutoslawski's Cello Concerto, a transcendent work composed in 1970.

Thursday, April 18 At 7:30 PM
Saturday, April 20 At 8 PM

Enter "**PIANO24**" before you select your seats
to save **15% OFF** Tickets and **No Fees**
Tickets from: \$35

[BUY NOW](#)